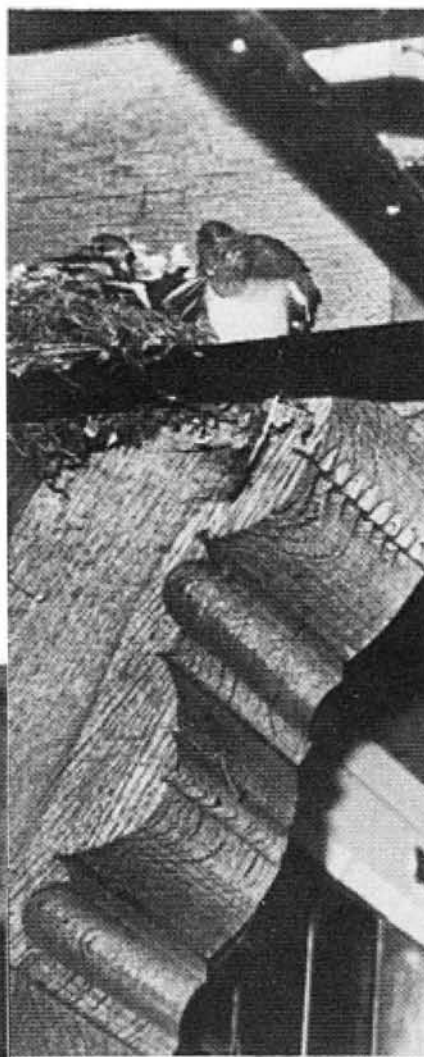
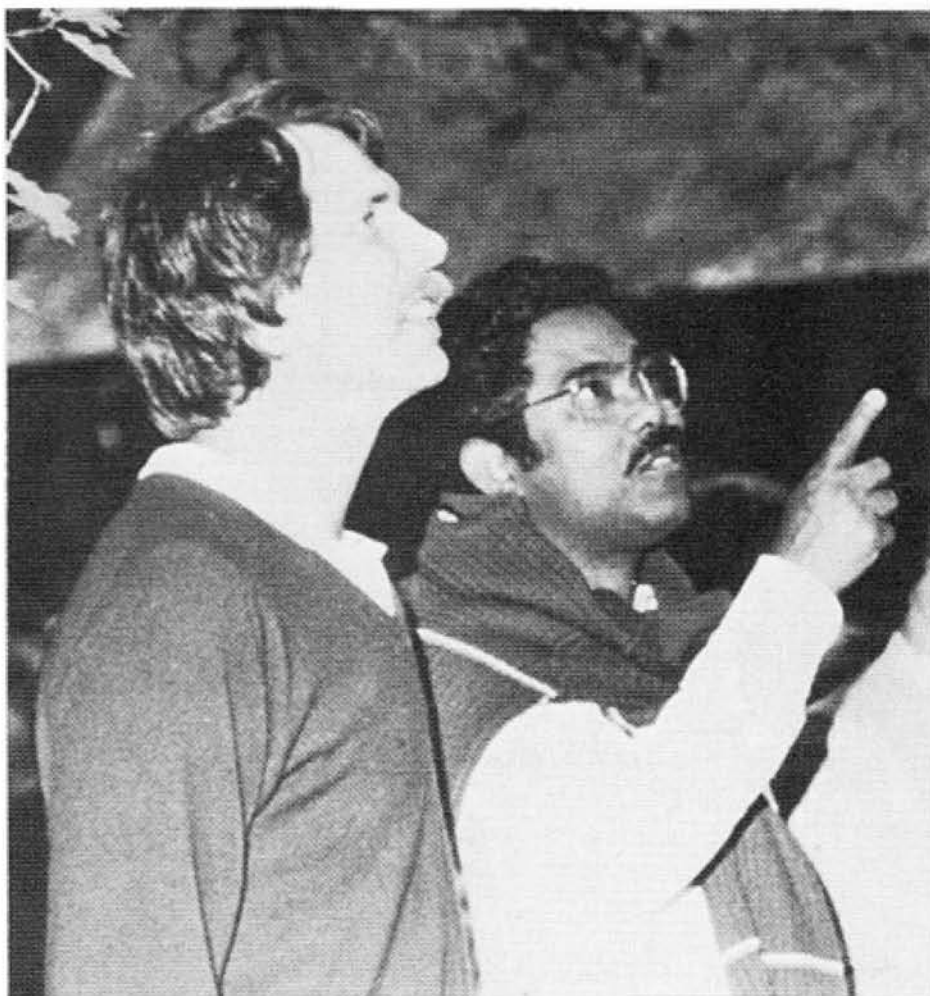


*Nicht müde werden
sondern dem Wunder
leise
wie einem Vogel
die Hand hinhalten.*

Hilde Domin in "Hier"
Fischer Verlag 1964
Fotos Regina Völz



Participants of the Wilsede Meeting enjoy the sight of the birds over the entrance of "De Emmenhof"

Wilsede, June 1984

Preface

In June 1984 a total of 169 physicians, scientists and students assembled in the now familiar and much-loved lair in the Wilsede Luneberg Heath near Hamburg, Germany, for the sixth biennial conference on Modern Trends in Human Leukaemia. This meeting, conducted by Prof. Rolf Neth in his own inimitable style, has established itself as one of the major events in the all too crowded programme of international conferences on leukaemia, cancer and related topics.

Some may ponder why, with its “rustic” setting – flies, equine deposits, and lack of easy exit –, Wilsede has such an irresistible and persistent lure for so many of the world’s top practitioners of leukaemia research? The answer is, I suspect, a cocktail of Rolf’s extraordinary charm, the pleasure of meeting friends and colleagues in a uniquely informal and relaxed atmosphere and the special style of the proceedings themselves, which focus on the evaluation of ideas and hypotheses rather than the cataloguing of data. Indeed the sixth Wilsede meeting maintained the usual high standard of highly original presentations, with Anders (the “fish” man), Duesberg, Ohno, Mitchison and Coutinho, and others providing incisive challenges to “conventional wisdom” and great entertainment. Carlo Croce sang a marvellous aria on the *myc* gene and Bob Gallo managed to get in a few words about quite an interesting-looking human retrovirus. It all looked pretty good to me, although Peter Duesberg expressed some powerful reservations about the significance of these latter findings. The two Fred Stohlman memorial lectures (this year by Duesberg and Mitchison) again provided highspots of the meeting.

On a sober and sad note, this meeting was marred by the loss during the preceding year of three outstanding scientists who have helped make Wilsede the success that it is: Henry Kaplan, Dick Gershon and Sol Spiegelmann. All three epitomised what is best about the Wilsede meeting and science itself, with their striking originality, debating skill and warm friendship. They will be sadly missed. As a token of respect to Henry Kaplan, the Henry Kaplan Awards for the best posters by young investigators were introduced at the sixth meeting.

Ken McCredie was presented with a special award to mark both the sheer audacity of his presentation and his special affection for the wild life of the Luneberg Heath.

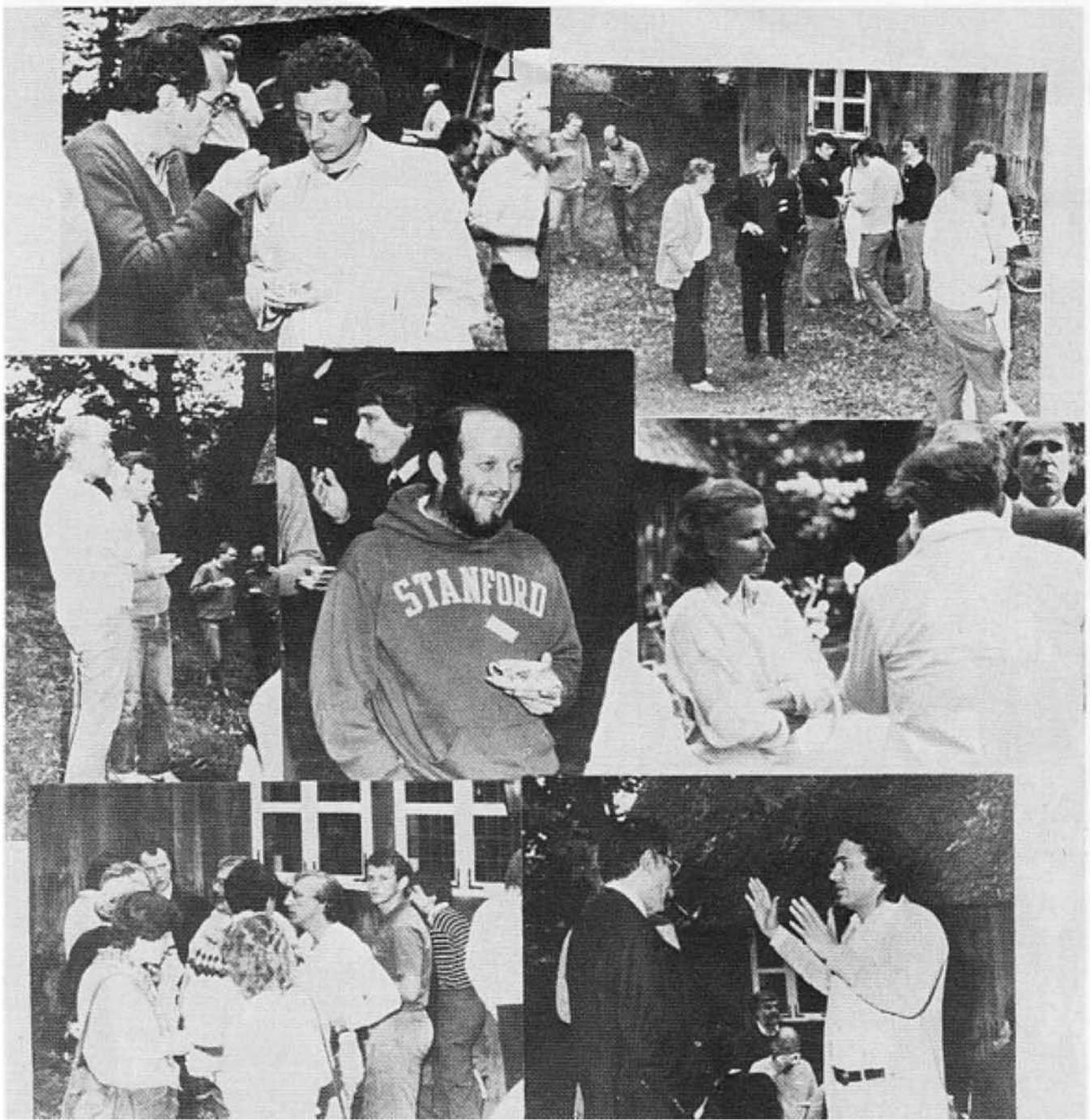
The Wilsede meetings have proved the ideal forum for practising physicians and basic scientists to meet together and discuss new innovations from molecular biology to treatment strategies. The “educational” component of Wilsede, enjoyed by both students and golden oldies alike, is not



to be underestimated; in an increasingly specialised, technical and rapidly developing research arena it serves a vital function. If, as we all hope, the exciting discoveries in (proto-)oncogenes in leukaemia and monoclonal antibody manipulation of leukaemic cells are to lead to new forms of diagnosis, monitoring and treatment of leukaemia and lymphoma, then Wilsede is the place which will foster the creative skills required.

As in previous Wilsede meetings, the organisers wish to express their thanks to the session chairmen for their help with the programme and emphasise their continued gratitude to Dr. Alfred Toepfer and his associates for keeping the *Naturschutzpark Lüneburger Heide* the delightful and unspoilt place that it is. We are particularly fortunate that the future of these meetings has now been assured by a generous biennial grant of DM 100 000 from the Erich und Gertrud Roggenbuck-Stiftung zur Krebs-hilfe, Hamburg, to be administered by the Dean of the Faculty of Medicine at the University of Hamburg, Prof. Karl H. Hölzer.

M. F. Greaves



Personal and scientific night discussion

Wilsede, June 1984



Personal and scientific discussion around and in "De Emmenhof"
Wilsede, June 1984